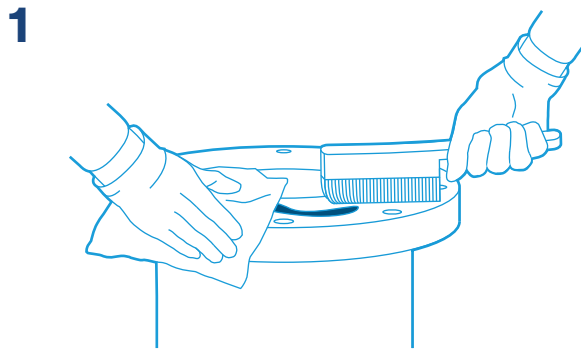
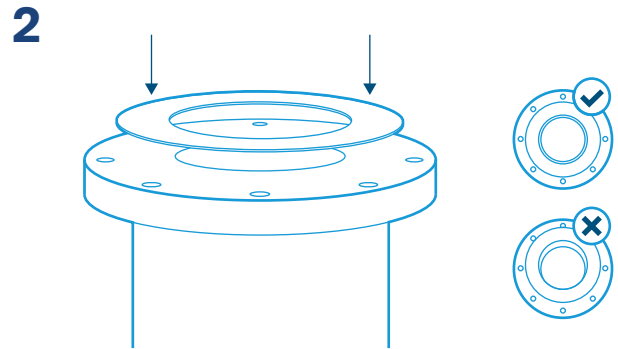


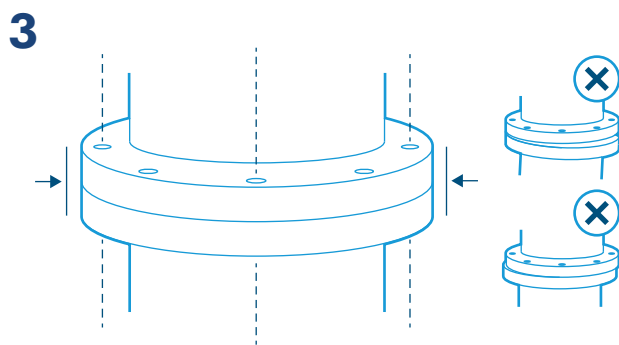
GASKET INSTALLATION



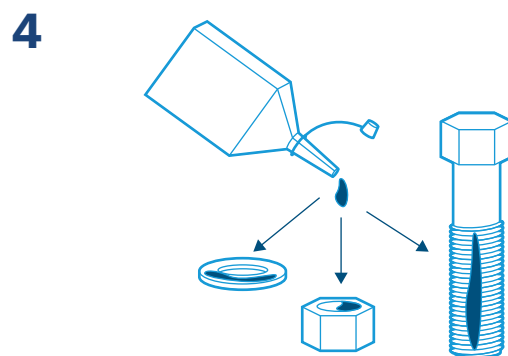
1
CLEAN AND EXAMINE



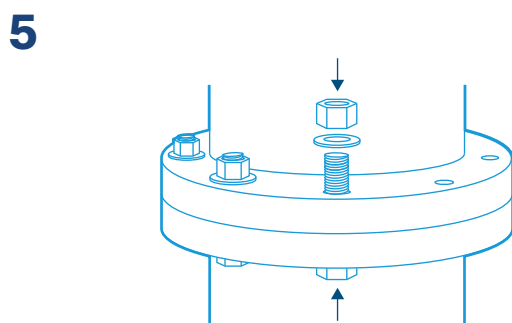
2
PLACE NEW GASKET



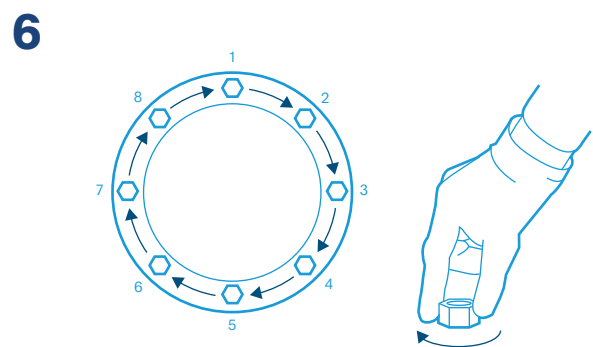
3
ALIGN AND CENTER



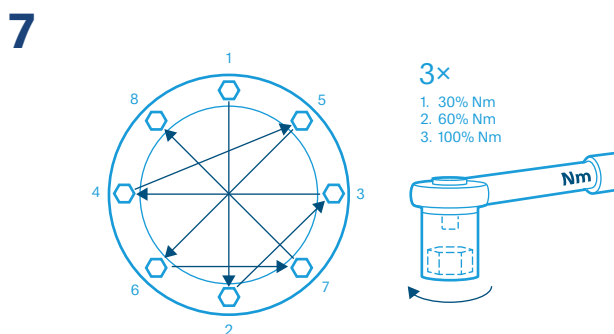
4
LUBRICATE BOLTS AND LOAD BEARING SURFACES



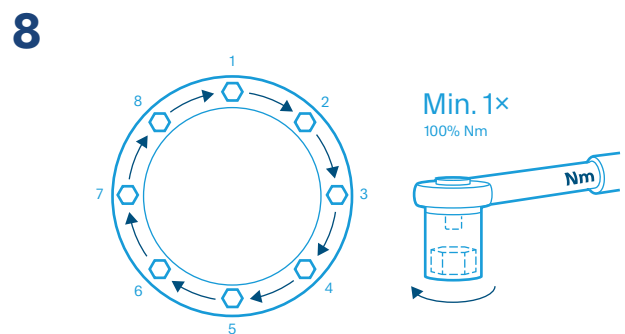
5
ATTACH BOLTS



6
TIGHTEN BOLTS MANUALLY



7
TIGHTEN BOLTS WITH A TORQUE WRENCH



8
TIGHTEN BOLTS WITH A TORQUE WRENCH



WHAT YOU NEED:
head protection, gloves, safety glasses,
cleaning equipment, torque wrench, steel brush, lubricant

