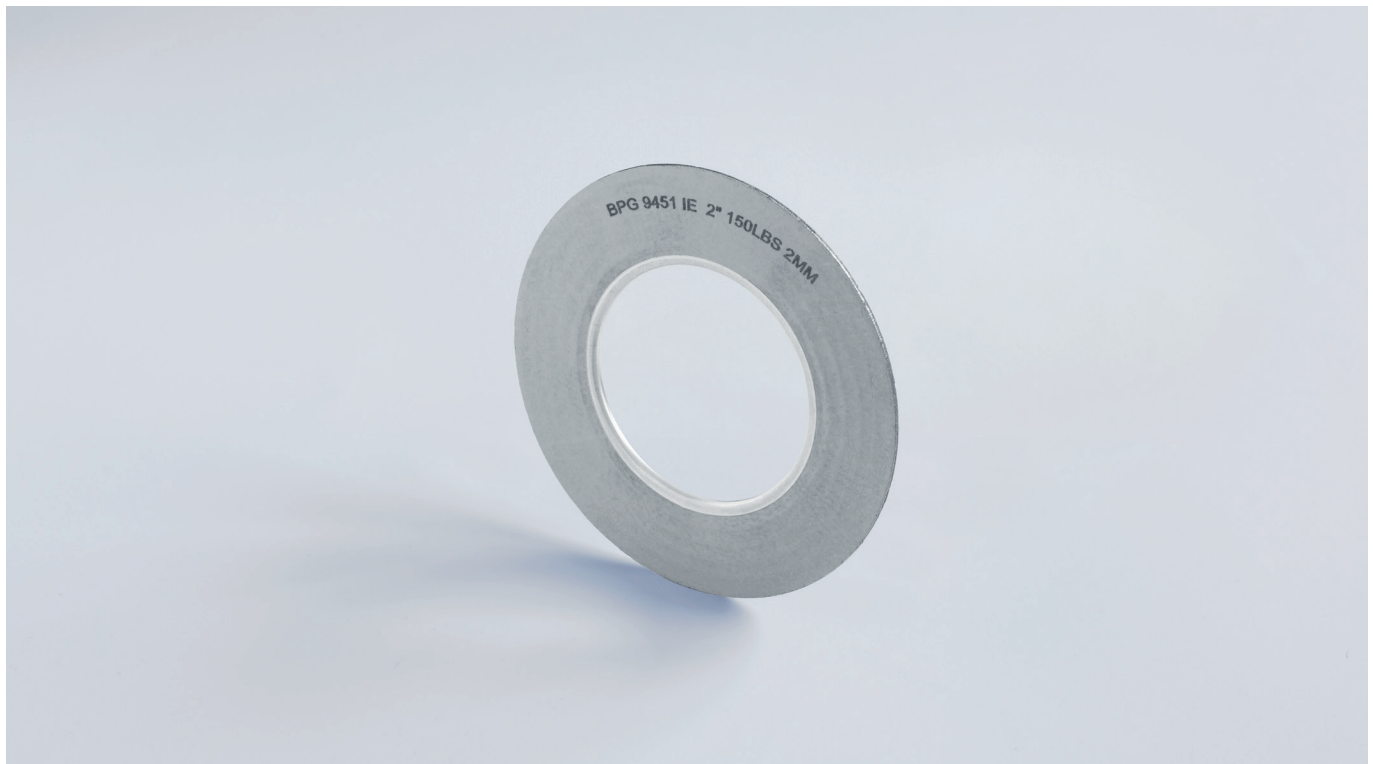


# BPG 9451 IE



## PROPERTIES

BPG 9451 IE Corrugated Metal Gaskets (CMG) is made of a corrugated stainless steel insert with a flat graphite foil layer applied on each side and fitted with an inner eye-let for higher blow-out safety. The CMG gasket provides good resilience.

## APPLICATIONS

Due to its high compressibility and good resilience, BPG 9451 IE is suitable for thermal cycling conditions in petrochemical, oil and gas, process, chemical and power plant industries, especially for heat exchangers, pumps, valves and compressors.

## TYPICAL PHYSICAL PROPERTIES

Sizes	ASME B16.21, EN1514
Pressure	Class 150 and 300 Lbs
Thickness	2.0 – 3.0 mm
Carbon content	98% or 99.85%
Stainless steel core	standard 316 L, other materials*
Chemical resistance	pH = 0 – 14

## OPERATION PARAMETERS

Temperature	–200°C... +500°C (in steam +550°C)
Pressure	150 bar

## PRODUCT SPECIFICATIONS

Certifications/approvals	on request
--------------------------	------------

\*available on request

## BENEFITS

- excellent sealing performance, even under lower bolt loads
- improved safety during handling and installation

- no sticking to flanges
- excellent thermal and chemical stability
- does not age or become brittle